



Find this design at our Oran Park display home

House - 246.60 m²

Suitable lot size of 15m x 29m



Key inclusions:

- Fixed site costs including HI-Class slab
- Coloured concrete driveway
- Carpet to bedrooms and home theatre
- Tiles to the balance of the home
- Remote control garage
- Stone kitchen benchtop
- 900mm appliances
- Feature Valencia Façade
- LED downlights to the living areas
- Land not included - T&Cs apply
- Fixed price for 180 days*
- Alarm system
- Garage storage
- Linen storage
- 'His & Her' main walk-in-robe
- Built-in-robos to the remaining bedrooms
- Treated frames & trusses
- Alfresco inc concrete slab & tiles
- Complete butlers pantry
- Plus much more*

Essentials**PLUS** Package Option

- ✓ Colorbond roof sheeting with Anticon 55ml blanket
- ✓ Monier low profile roof tiling with sarking
- ✓ Increase ceiling heights to 2600mm
- ✓ Built in laminate laundry cupboards

Upgrade for only **\$3000**

Call Sales on 1300 366 766
or visit newlivinghomes.com.au

NEW LIVING HOMES
where desirability meets affordability

House - 246.60 m²

Suitable lot size of 15m x 29m

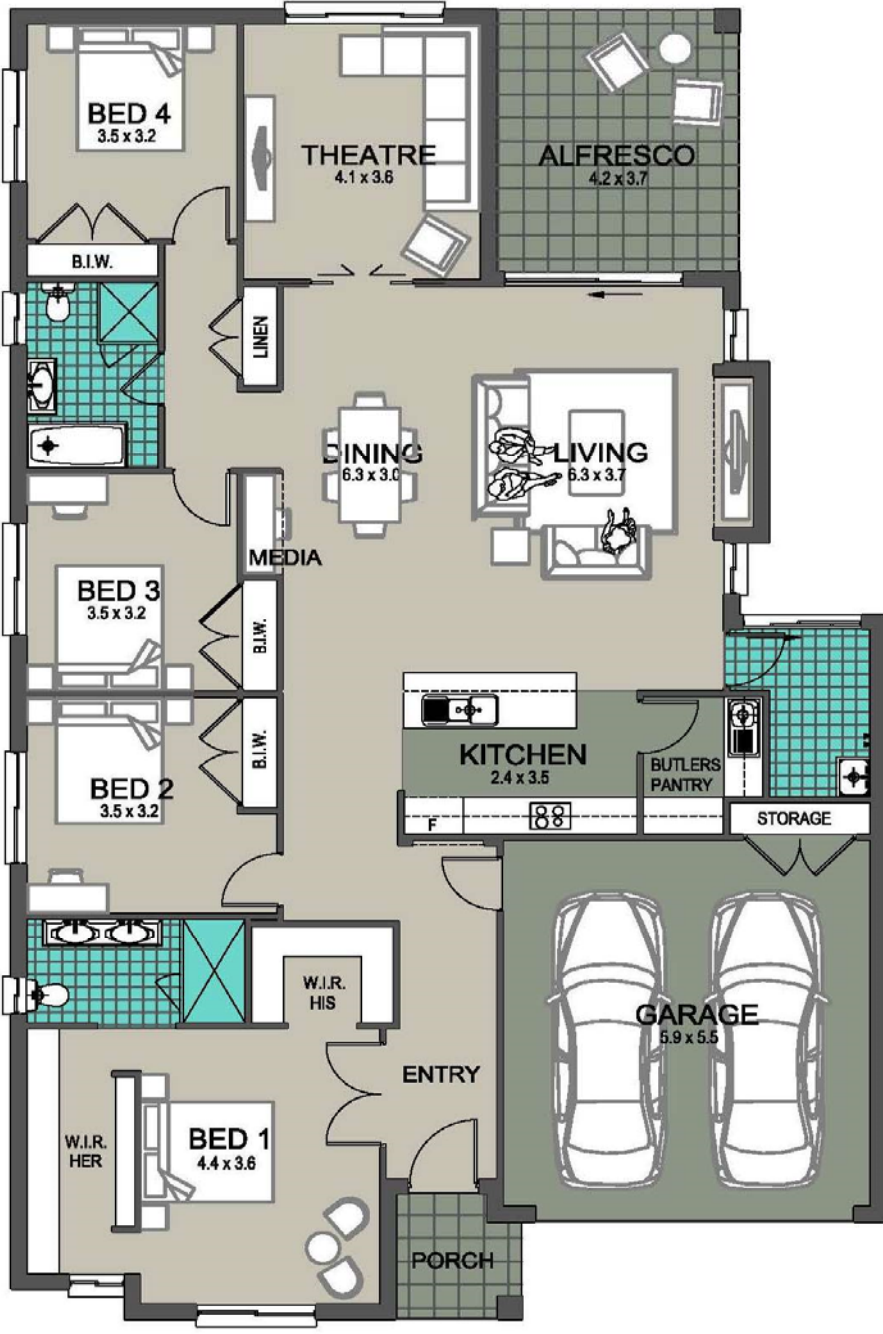
4 2 2 1

Areas

Living area	190.70 m ²
Garage	36.95 m ²
Alfresco	15.35 m ²
Porch	3.60 m ²
Total area	246.60 m²
Squares	26.54

Notes

20980



13160

Driveway shape/contours are subject to change due to developer installment times regarding layback.

Site Drawn without using a DP of linen plan and is subject to registration to confirm boundary locations/lengths

Your New Living Homes sales consultant

NEW LIVING HOMES
where desirability meets affordability

Part of the
MASTERTON Group