



Find this design at our Airs display home

House - 222.40 m²

Suitable lot size of 13m x 28m



Key inclusions:

- Fixed site costs including HI-Class slab
- Coloured concrete driveway
- Carpet to bedrooms and home theatre
- Tiles to the balance of the home
- Remote control garage
- Stone kitchen benchtop
- 900mm appliances
- Feature Elara Façade
- LED downlights to the living areas
- Land not included - T&Cs apply
- Fixed price for 180 days*
- Alarm system
- Linen storage
- Walk-in-robe to main bedroom
- Built-in-robos to the remaining bedrooms
- Treated frames & trusses
- Alfresco inc concrete slab & tiles
- Complete butlers pantry
- Plus much more*

Essentials**PLUS** Package Option

- ✓ Colorbond roof sheeting with Anticon 55ml blanket
- ✓ Monier low profile roof tiling with sarking
- ✓ Increase ceiling heights to 2600mm
- ✓ Built in laminate laundry cupboards

Upgrade for only **\$3000**

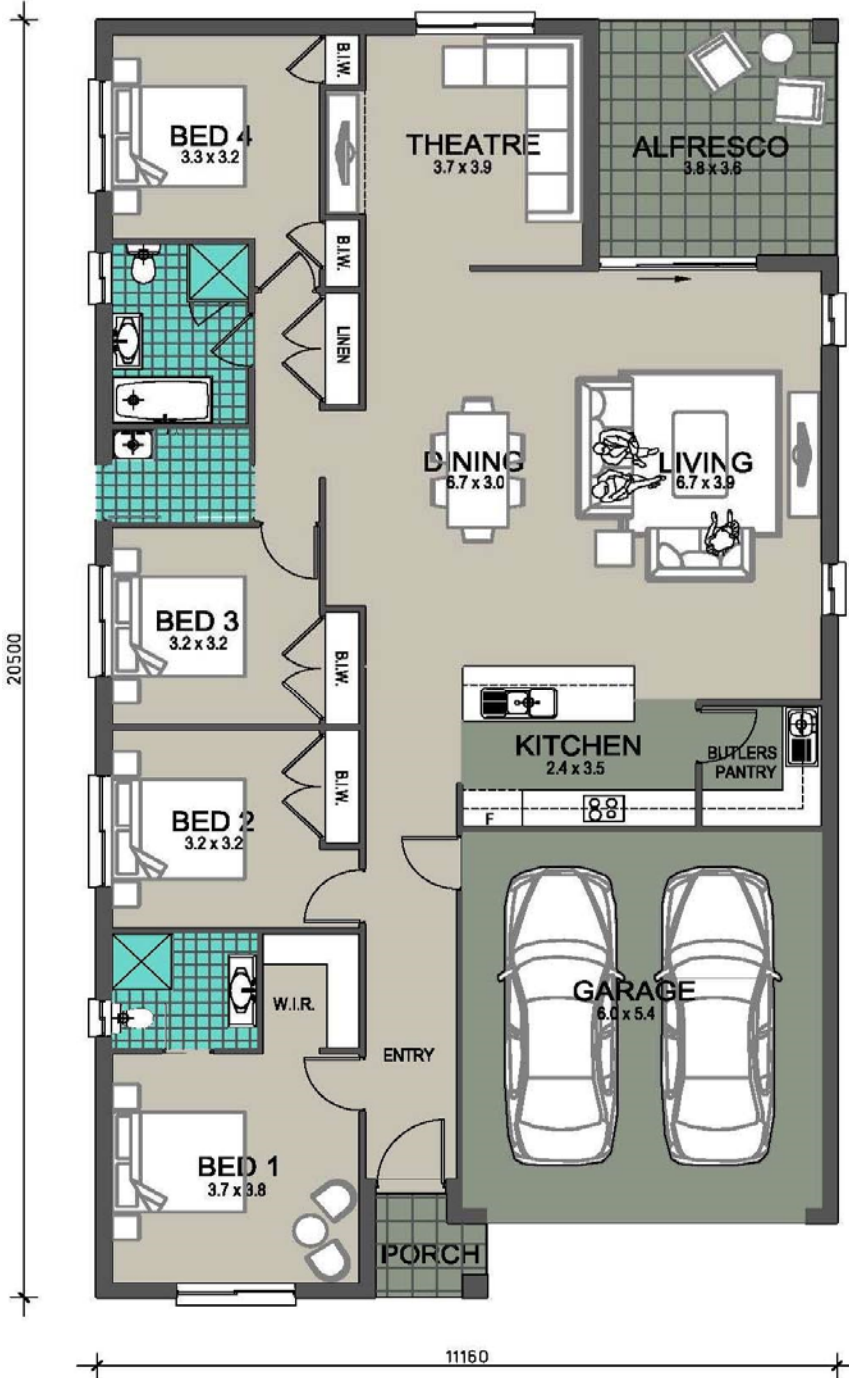
Call Sales on 1300 366 766
or visit newlivinghomes.com.au

NEW LIVING HOMES
where desirability meets affordability

House - 222.40 m²

Suitable lot size of 13m x 28m

4 2 2 1



Areas

Living area	170.70 m ²
Garage	35.50 m ²
Alfresco	13.65 m ²
Porch	2.55 m ²
Total area	222.40 m²
Squares	23.94

Notes

Driveway shape/contours are subject to change due to developer installment times regarding layback.
Site Drawn without using a DP of linen plan and is subject to registration to confirm boundary locations/lengths

Your New Living Homes sales consultant